

CHICAGO agent

FOR THE WELL-INFORMED
REAL ESTATE PROFESSIONAL

VOL. 5, ISS. 23 | 11.17.08
CHICAGOAGENTMAGAZINE.COM

Michael Sato,
president; Elana
Spector, VP of
marketing; and Chris
Feurer, CEO, Jameson.
Winners of Favorite
Sales & Marketing
Company, City.

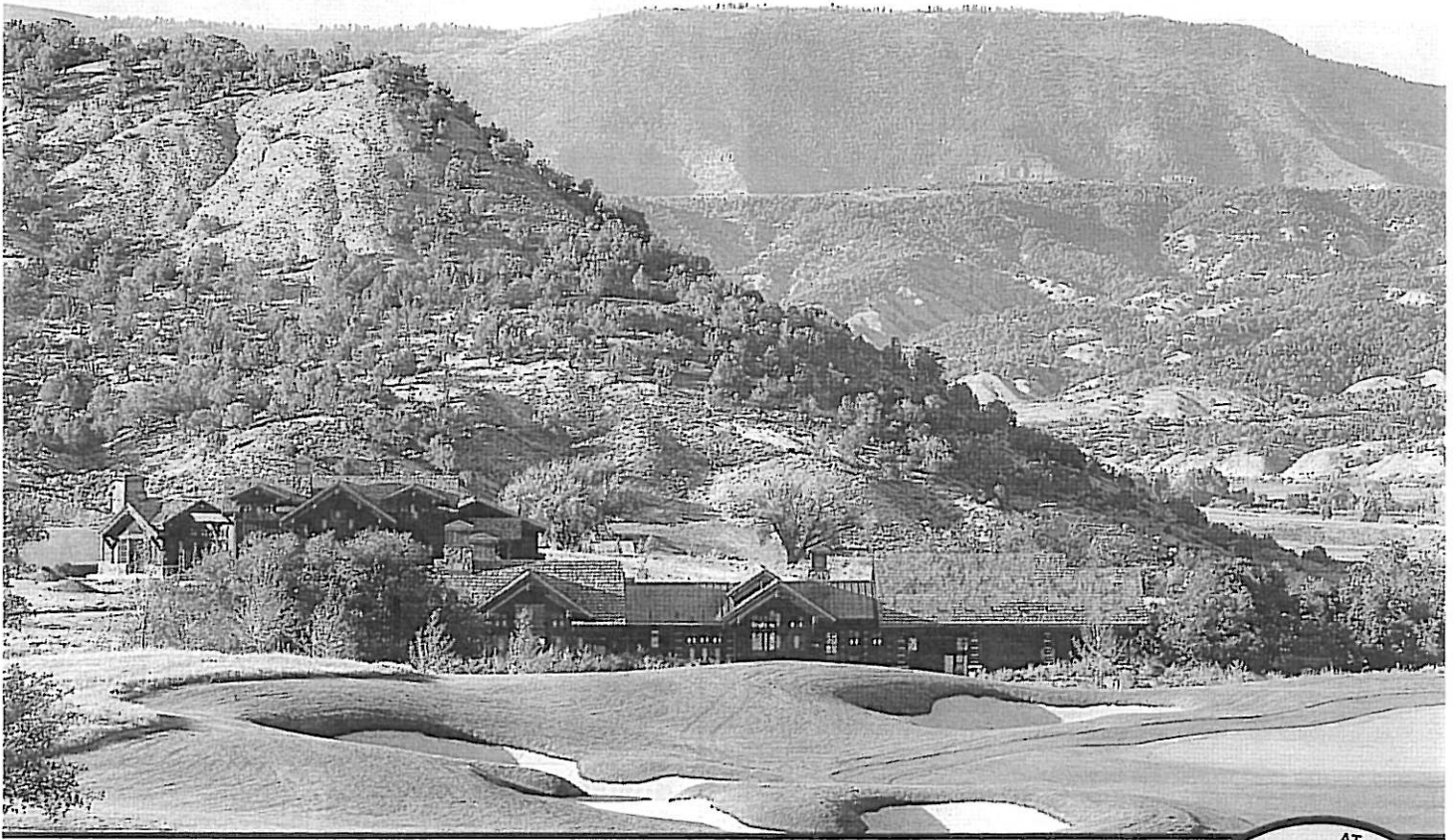
• 2008 • **AGENTS' CHOICE** AWARDS

**Polls Show
Housing Optimism**

The Power of Intuition

22 Reasons to Twitter

Out Of Town



Adam's Rib Ranch Eagle, Colorado

Adam's Rib Ranch is an exclusive community that sits on 1,662 acres of land, featuring spacious homesites and panoramic views of snow-capped peaks. Home of Adam's Mountain Country Club, the community features an 18-hole championship Tom Weiskopf-designed golf course, personalized concierge service and access to mountain recreation. There is an on-site equestrian center and fly-fishing with access to miles of rolling creeks.

Adam's Rib Ranch provides Vail Valley with a unique real estate opportunity with a limited number of exclusive homesites and custom homes, as well as supplemental rental options for members. The architecture of the community will incorporate mountain living with emphasis on quality of design and finish. Building envelopes have been created within each homesite to support the design of the community, ensuring privacy and scenic views for all homeowners. Additionally, most homesites adjoin open space, the golf course or Bureau of Land Management property providing panoramic views and privacy.

There are 99 custom homesites spaced throughout the community that range in size from four to 10 acres, including one 35-acre parcel. There are three custom homes ranging from 3,800 to 4,200 square feet, and there are five member cottages available for rent by owners, members and their guests.

The golf course, located in the heart of the Vail Valley, features eight lakes, a driving range, practice chipping and putting areas. The clubhouse at the Adam's Rib Ranch community is centrally located and includes a restaurant and member lounges, spa facilities, bar, private dining room, state-of-the-art fitness center, men's and women's locker rooms and the golf shop.

For more information, call John Helmering at 970.328.4552, e-mail johnh@adamsribbranchsales.com or visit adamsribbranch.com.

COPYRIGHT 2008 AGENT PUBLISHING LLC



AT A GLANCE
With the increased popularity of Vail Valley as a top tourist destination, thousands of visitors a year are migrating to the Rocky Mountains to build vacation or permanent residences. As a result, communities like Vail, Beaver Creek and Aspen have experienced sprawling growth. As this trend continues, people are looking for new and undiscovered locations that embrace the western Rocky Mountain spirit that are less populated, yet close enough to the top ski resorts. Eagle, Colo., has seen unprecedented growth in recent years, and is expected to be the next Vail Valley hot spot.

ADAM'S RIB RANCH

Location	Eagle, Colorado
Housing Type	Homesites and custom homes
Number of Units	99 homesites and 3 custom homes
Number Sold	0
Price Range	Homesites from \$900,000
Delivery Date	Immediate
Co-op	Contact for details
Architect	Rudi Fischer Architects of Vail
Developer	HBE Corporation