

The Spirit of Central Oregon

BEND LIVING™

OCTOBER 2008

BEND & AFRICA

Help and hope
from worlds away

\$4.95 www.bendliving.com



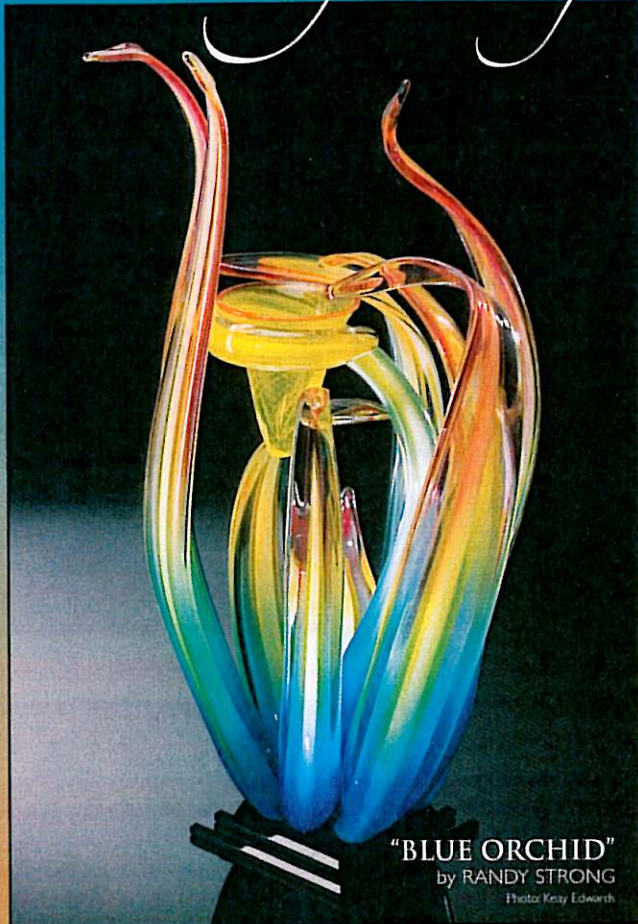
THE BADLANDS' OLD GROWTH AND VAST BEAUTY
REMODEL: TIPS FOR A SUCCESSFUL RENOVATION
BODY & SOUL: DE-MYSTIFYING MASSAGE

NEW PRONGHORN
DEVELOPMENT
**BLENDS
TUSCANY**
WITH HIGH DESERT



Courtesy of Pronghorn (2)

Dancing with glass



"BLUE ORCHID"
by RANDY STRONG
Photo: Kay Edworth

Meet Renown Artist Randy Strong at the September 5 Art Walk,
and Saturday September 6 at GLASS SYMPHONY

GLASS
SYMPHONY
GALLERY

388-0331

916 NW WALL STREET • BEND, OREGON • GLASSSYMPHONY.COM

The raw beauty of the high desert permeates the comfort of your own home in Tesana, the newest neighborhood in Bend's Pronghorn community. The inspiration for Tesana is the romantic elegance of Tuscany wedded to the lines of Frank Lloyd Wright and pared down with the organic simplicity of Central Oregon. Renowned architectural firm Bassenian/Lagoni Architects have designed seven customizable floor plans between 2,131 and 3,553 square feet that embrace indoor-outdoor living by including central courtyards. There are seventy-one sites available and sites start at \$375,000. Construction, interior design and landscaping are provided by Pronghorn Homes. Tesana emphasizes a simple lifestyle while maintaining the extraordinary amenities and casual luxury that is offered at Pronghorn.



INFO

800.541.9424
www.tesanaliving.com