

THE PRIVATE JET LIFESTYLE MAGAZINE

ELITE

T R A V E L E R

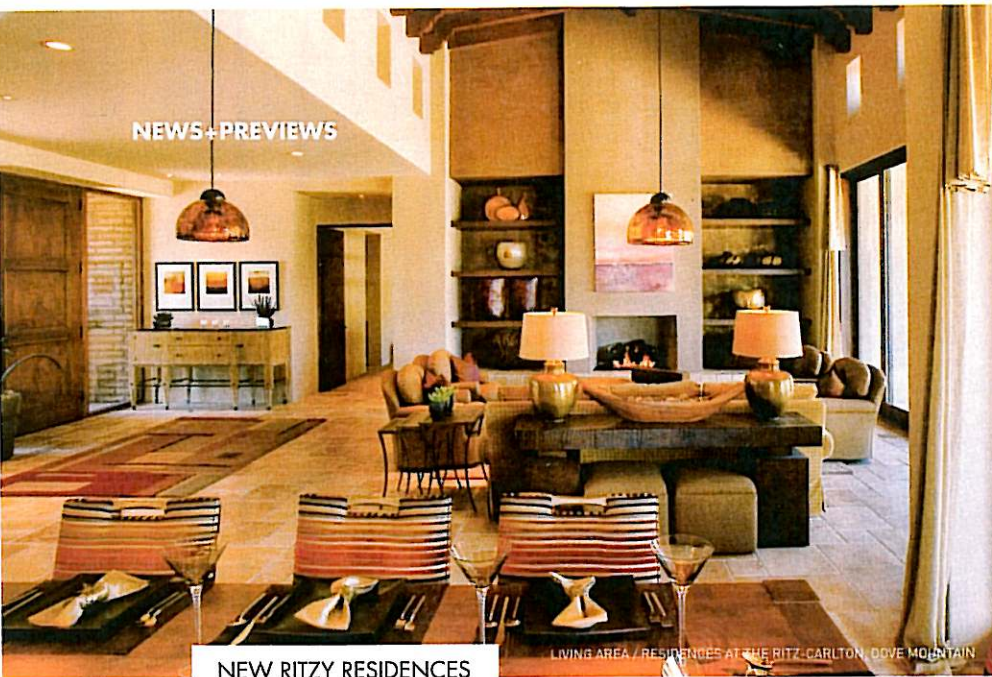
JAN/FEB
2009



ADVENTURES
OF A LIFETIME

EXCLUSIVE LUXURY GUIDES www.elitetraveler.com

\$35.00



NEW RITZY RESIDENCES

LIVING AREA / RESIDENCES AT THE RITZ-CARLTON, DOVE MOUNTAIN

Situated in the idyllic High Sonoran Desert near Tucson, Arizona, the new **Residences at the Ritz-Carlton, Dove Mountain**, comprise the luxury residential portion of the largest branded resort development in the continental U.S. (the final 850-acre development will include a 250-room Ritz-Carlton hotel and spa as well as a **Ritz-Carlton Golf Club** sporting Jack Nicklaus Signature courses). The most desirable of the approximately 300 residential properties will no doubt be the 20 custom estate home sites. These luxurious plots are adjacent to the golf courses or border open spaces that showcase the scenic Tortolita Mountains. Of course, signature Ritz-Carlton concierge service, home management, landscaping, housekeeping, valet, catering and room service from the resort, as well as access to golf, fitness, swimming and tennis facilities specifically for members and residents, are all included. Custom estate home sites are available from \$700,000 to \$1.8 million.

Contact: Holly Koob, Phone: (520) 572-3000; Email: holly.koob@ritzcarlton.com;

Website: www.theresidencesdovemountain.com

LONDON'S BEST

In addition to a history of thoughtful, discreet service and a wonderful location near Hyde Park, **The Milestone** in London now offers A-list guests a new art deco-inspired suite full of rare Mistinguett posters and memorabilia to make their London sojourn that much more memorable. Mistinguett, or Jeanne Bourgeois, was the queen of the Paris music hall during the Jazz Age—her legs were insured for \$1,000,000. Decorated with items from a lot purchased at Christie's, the **Mistinguett Suite** (\$930 a night) is chock full of 16 cleaned and restored pieces (including art deco furniture, lamps, pictures, posters and photographs) that play theatrically against the accommodation's red fabric walls. Of course, for Old World baronial splendour, the signature **Prince Albert Suite** (\$1,240 a night) offers 667-square-feet of traditional opulence, as well.

Contact: General Manager Andrew Pike, Phone: 44-20-7917-1051;

Email: apike@rchmail.com; Website: www.milestonehotel.com



PRINCE ALBERT SUITE / THE MILESTONE

HOTELS TO COME

BY MARY GOSTELOW

Jumeirah Private Island Phuket in Thailand will be the company's first resort outside of the UAE when it opens in late 2010. The resort is on Koh Raet island, four minutes by private motor yacht from Ao Po Bay, which is 15 minutes from Phuket International Airport. All 105 villas will have private infinity pools. Guests can enjoy over 1,200 feet of sandy beach, a marina and a yacht club.

Website: www.jumeirah.com

Baglioni Hotel and Rácz Thermal Spa, Budapest opens on the Buda side of the Danube in spring 2009.

There will be 140 rooms designed by Federico Spagnolo. The **Presidential Suite** is 1,237 square feet. A big draw will be the 80,000-square-foot Rácz Thermal Spa and Baths, which has 20 treatment rooms and 12 medicinal pools. There is also a Turkish bath that has been on this site since 1550. Hotel general manager is Jean-Francois Pelouard.

Website: www.baglionihotels.com

El Encanto in Santa Barbara, Calif., is set to open next fall under General Manager Bruno Brunner, who has relocated from **Reid's Palace** on Madeira. Legendary designer Bob Zimmer is doing the interiors of the 92-room property, which dates back to 1911. The ten acres of land, originally laid out by Cyrus Eaton, are being re-landscaped by Kate O'Reilly Rogers. Clark Gable, Carole Lombard and Hedy Lamarr are among the golden era stars who used to love this place.

Website: www.orient-express.com

Castel Monastero, in the Ombrone valley 15 miles from Siena, Italy, dates back to the 11th century. It has been converted, with the help of Hirsch Bedner Associates, into a 71-room luxury resort with one 1,900-square-foot villa. General Manager Andrea Prevosti, who has come from **The Chedi Milan**, says the 10,000-square-foot spa will specialize in anti-aging and weight-loss programs. It has a working wedding chapel and will offer regular on-site cooking lessons.

Website: www.castelmonastero.com

Hilton Iguazu Resort, on the Argentinian side of Iguazu Falls, opens June 2009. The 167-room resort is designed by Studio MRA from Buenos Aires. The 1,500-square-foot **Presidential Suite** has three bedrooms and can be supplemented by one more, all overlooking the amazing river. Emilio Serra is the designer of the adjacent 18-hole golf course.

Website: www.hilton.com