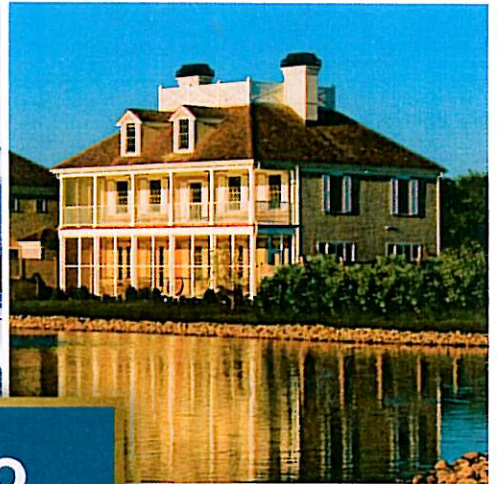


Robb Report

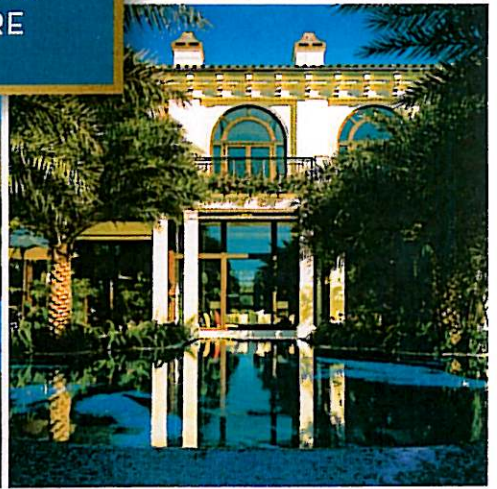
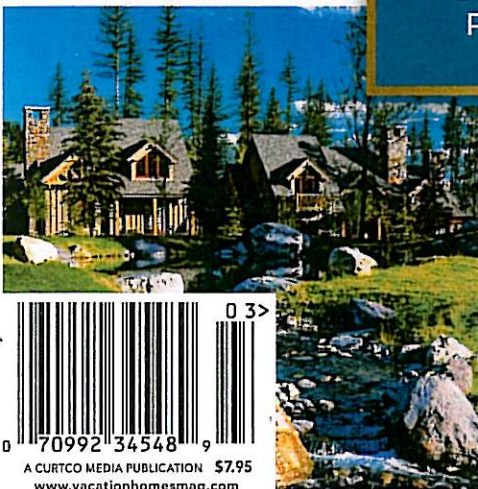
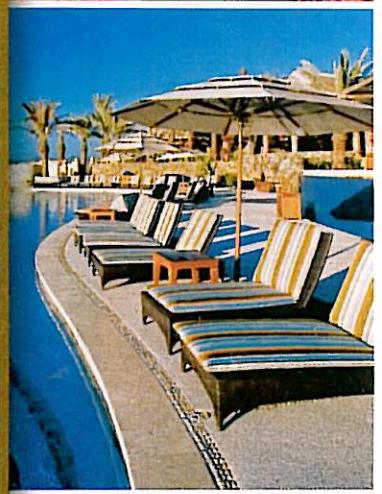
FEBRUARY/MARCH 2009

Vacation Homes

EXCEPTIONAL WATERFRONT, GOLF, COUNTRY, MOUNTAIN, AND VINEYARD PROPERTIES

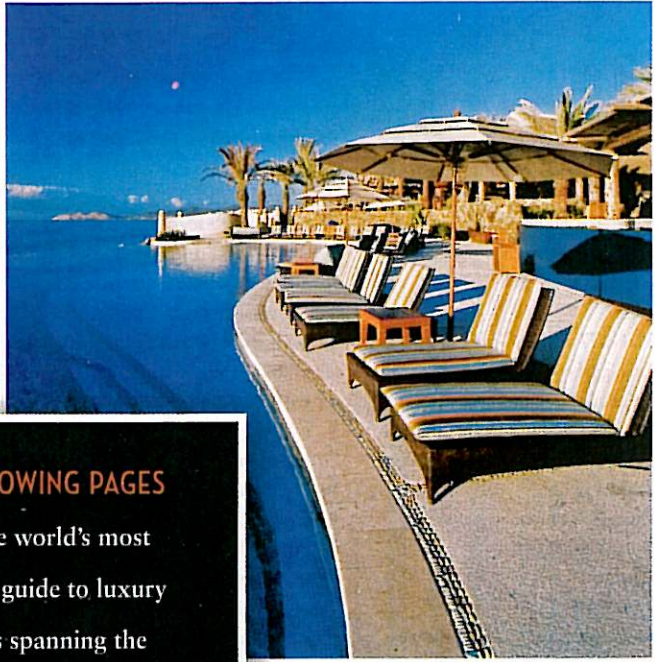


ULTIMATE GUIDE TO
RESORT COMMUNITIES
400+ Escapes in
 ANGUILLA | ARIZONA | BERMUDA
 CANADA | COLORADO | COSTA RICA
 FLORIDA | MEXICO | UTAH & MORE

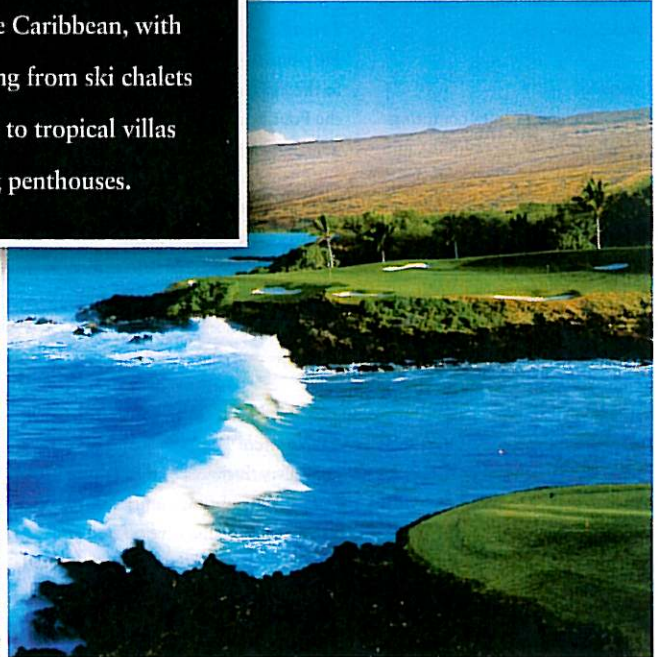
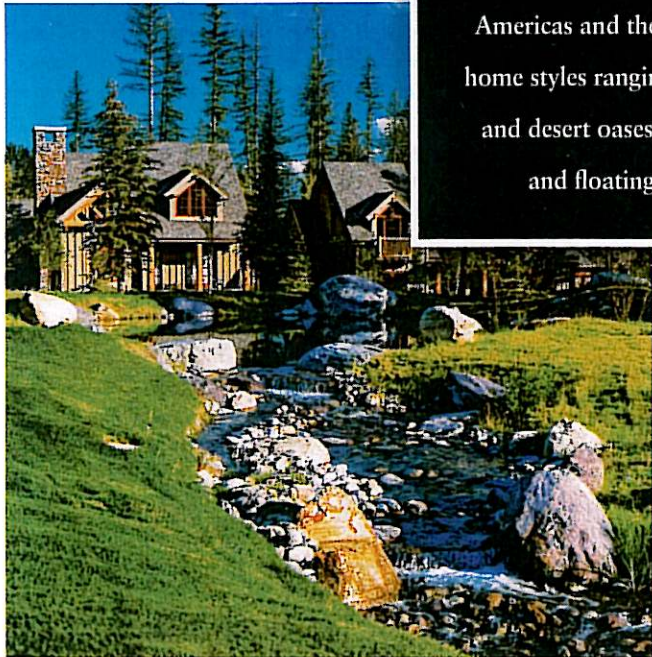


0 3 >
 70992 34548 9
 A CURTCO MEDIA PUBLICATION \$7.95
 www.vacationhomesmag.com

PLUS: TURNING YOUR HOME INTO A FRACTIONAL || BARBADOS' BEST BEACH ESTATE
 EXTREME SKIING IN PARK CITY || INSIDE NEW YORK CITY'S HOTTEST NEIGHBORHOOD



ON THE FOLLOWING PAGES
we present the world's most
comprehensive guide to luxury
developments spanning the
Americas and the Caribbean, with
home styles ranging from ski chalets
and desert oases to tropical villas
and floating penthouses.



2009 / RESORT COMMUNITY BUYER'S GUIDE

UNITED STATES: **PAGE 60** CANADA: **PAGE 74** LATIN AMERICA: **PAGE 76**
THE CARIBBEAN/ATLANTIC: **PAGE 80** RESIDENTIAL CRUISE LINERS: **PAGE 85**

UNITED STATES

ARIZONA

GREER: *The Club at Hidden Meadow Ranch*

Fractional- and whole-ownership of hand-hewn log homes located in the Apache National Forest
www.hiddenmeadow.com

PAYSON: *The Rim Golf Club*

Mountain golf community surrounded by more than 3 million acres of national forest and located in a region that is one of only three pure-air ozone belts in the world
www.therimgolfclub.com

PHOENIX/SCOTTSDALE:

Baraca Estates

Sixteen one-acre lots featuring homes with Andalusian and Tuscan influences
www.thebarongroup.us

DC Ranch

This 8,281-acre community comprises about 2,700 Spanish-, Craftsman-, and Western Regional-style homes and a golf course designed by Tom Lehman and John Fought
www.dcranch.com

Desert Mountain

Six Jack Nicklaus championship golf courses and 1,700 homes in the high Sonoran Desert
www.desertmountain.com

Esperanza Estates at Pinnacle Peak

Seventeen homesites start at \$4 million and are on 80 acres of Sonoran desert at the foot of Pinnacle Peak
www.esperanzaatpinnaclepeak.com

Estancia

Originally zoned for 800 lots, the 640-acre, low-density community offers 267 homesites and a Tom Fazio golf course
www.discoverylandco.com

Four Seasons Residence Club Scottsdale at Troon North

A total of 200 one-eighth shares in adobe-style villas adjacent to the 210-room Four Seasons Resort Scottsdale
www.fourseasons.com

Mirabel

Golf community with a Tom Fazio-designed golf course and Southwest-style homes and custom homesites
www.mirabel.com

Montelucia Resort, Spa and Residences

Spanish-style homes at the base of Camelback Mountain have access to the Montelucia, InterContinental's first resort in the U.S.
www.montelucivillas.com

Phoenician Residence Club

Two- and three-bedroom fractional residences located in the Phoenician resort, which offers 27 holes of golf, 11 tennis courts, eight pools, and a 165-foot waterslide
www.phoenicianresidences.com

Privada

Fifty-one homes and homesites resting in the Pinnacle Peak foothills next to the Four Seasons Resort Scottsdale
www.privadapinnaclepeak.com

The Residences at the Ritz-Carlton, Paradise Valley

The 110-acre enclave will include homes and homesites priced from about \$2 million
www.rcpvluxury.com

The Rocks Luxury Residence Club at Pinnacle Peak

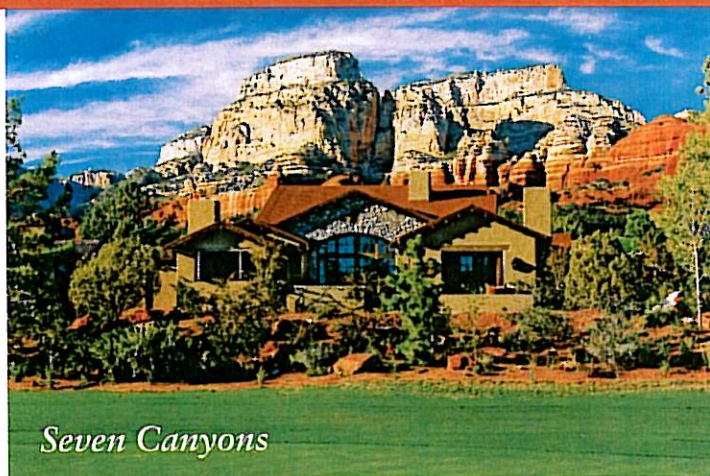
One-seventh shares of this Troon Golf-managed community's three- or four-bedroom villas are offered and come with access to more than a dozen of the area's golf courses, including Bill Coore and Ben Crenshaw's Talking Stick North and South courses
www.therocksclub.com

Sereno Canyon

Featuring 128 custom homesites, the development is one of the last north Scottsdale projects to offer lots averaging more than 2.5 acres
www.serenocanyon.com

Silverleaf

Golf community with a Tom Weiskopf-designed course and residences in a Spanish-Colonial or Mediterranean



Seven Canyons

► THE BURNT-ORANGE BLUFFS, the cobalt sky, and the golden sun lured Kim and Cynthia Reynolds from Berwyn, Pennsylvania, to Sedona, Arizona, but the five-star service and amenities of Seven Canyons seduced them to return. The couple own two one-tenth shares in the residence club, which they and their daughters, ages 16 and 20, visit three to four times a year, up to the 56 days they are allotted. "We come to get away from everything, which is easy since the club is surrounded by the 100,000-acre Coconino National Forest," says Kim. "We keep a slow, leisurely pace while we're here." For him and his wife, that means sleeping in, enjoying the paper that is delivered each morning, taking golf lessons, and playing the Tom Weiskopf course. "We recently entertained guests, so we had the club's head chef and his team come to our villa to prepare dinner," he says. "They serve, clean up, and then leave—there are no hassles for us. We like the club so much we're looking to go to full-ownership."

Fractionals from \$425,000; whole ownership from \$2.95 million. www.sevencanyons.com

style; homeowners have access to amenities at the adjacent DC Ranch
www.silverleaf.com

W Scottsdale Hotel & Residences

Eighteen condos located within the 224-room hotel, which features modern decor, three bars, a Bliss spa, and a sand-surrounded pool
www.starwoodhotels.com/whotel

Whisper Rock Estates

Owners of the 200 homesites have exclusive access to two 18-hole golf courses and a private three-acre park
www.whisperrock.us

SEDONA:

Mii Amo Residences

Eight villas designed by Gluckman Mayner Architects will neighbor the 24,000-square-foot Mii Amo destination spa
www.villasatmiiamo.com

Seven Canyons (see above)

TUCSON:

Estates at Honeybee Ridge

Single-story houses on more than one-acre parcels blend with the topography to maximize views of the Oro Valley
www.honeybeeridge.com

Pima Canyon Estates

A 450-acre community at the edge of the Coronado National Forest, with miles of trails that access the preserve
www.pimacanyon.com

The Residences at the Ritz-Carlton, Dove Mountain

Golf and spa resort offers custom homes and homesites adjacent to two Jack Nicklaus golf courses
www.theresidencesdovemountain.com

Saguaro Ranch

Eighty percent of the 1,035-acre community will be undeveloped, while the remaining acreage will include homesites, a guest ranch, a spa, an indoor theater and an outdoor amphitheater,